

B&O 0-4-0 SWITCHER

1:29 SCALE • 45 mm GAUGE



G721-02

B&O 0-4-0 Switcher #96, Live Steam

Four switchers (96~99) were built in 1912 by Baldwin for the B&O. Initially constructed as saddle tank engines, some were given slope tenders and new cabs in later years. The diminutive size and short wheelbase were required to handle the tight curves where these locomotives were used.

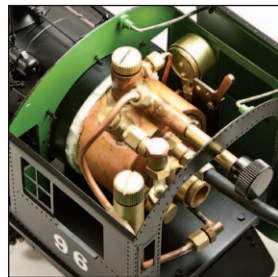
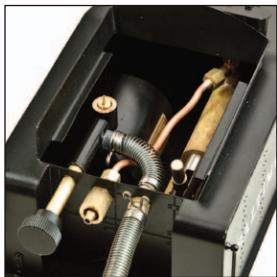
The live steam AML models are butane gas fired and are constructed with brass & stainless steel. Each copper boiler is certified by pressure tests to three times the normal working pressure. The boiler is fitted with a water level glass, steam valve, water injection valve and pressure gauge. The cab roof lifts up and tilts sideways to give easy access to the cab interior.

SPECIFICATIONS

Scale:	1:29
Gauge:	45 mm
Mini. Radius	48" (1.2 M)
Length:	22.69" (582 mm)
Width:	4.02" (102 mm)
Height:	5.83" (148 mm)

FEATURES

- Butane fired
- Piston valve
- Pressure gauge
- Water level glass
- Displacement lubricator with blow down valve
- Gas tank in tender
- Hand operated water pump in tender



SKU

DESCRIPTION

G721-01	B&O 0-4-0 Switcher, Unlettered, Live Steam
G721-02	B&O 0-4-0 Switcher #96, Live Steam
G721-03	B&O 0-4-0 Switcher #99, Live Steam

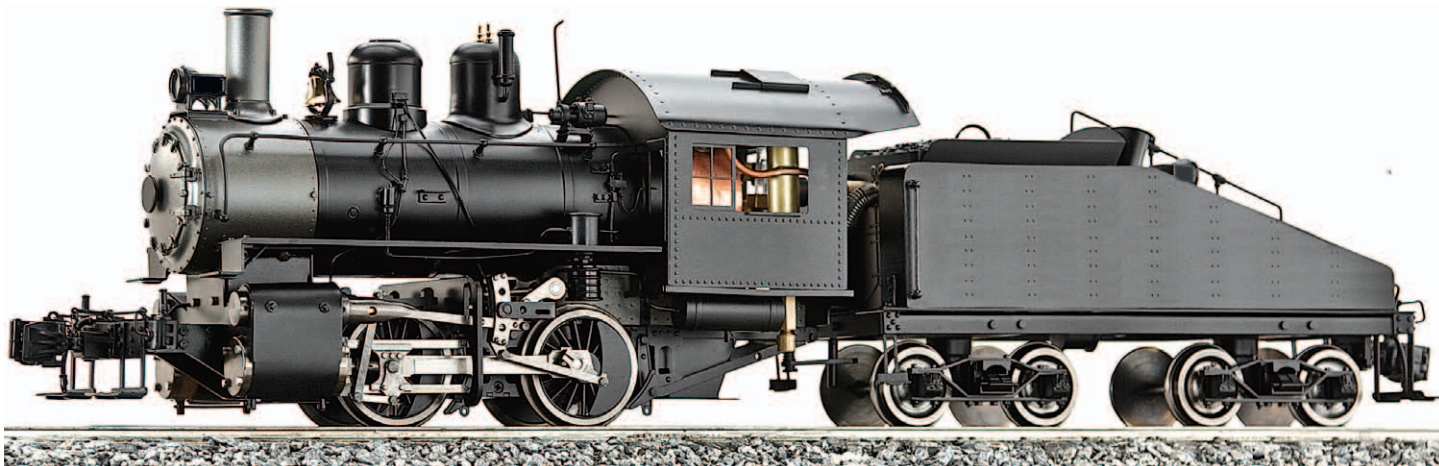
ITEMS SUBJECT TO CHANGE IN PRICE, COLOR, SPECIFICATION, DESIGN AND AVAILABILITY WITHOUT NOTICE.



33268 CENTRAL AVE, UNION CITY, CA 94587, USA TEL: (510) 324-3399 FAX: (510) 324-3366
WWW.AMERICANMAINLINE.COM INFO@AMERICANMAINLINE.COM

B&O 0-4-0 SWITCHER

1:29 SCALE • 45 mm GAUGE



G721-01 B&O 0-4-0 Switcher Unlettered, Live Steam



G721-02 B&O 0-4-0 Switcher #96, Live Steam



G721-03 B&O 0-4-0 Switcher #99, Live Steam

ITEMS SUBJECT TO CHANGE IN PRICE, COLOR, SPECIFICATION, DESIGN AND AVAILABILITY WITHOUT NOTICE.



33268 CENTRAL AVE, UNION CITY, CA 94587, USA TEL: (510) 324-3399 FAX: (510) 324-3366
WWW.AMERICANMAINLINE.COM INFO@AMERICANMAINLINE.COM